

CB Series Weatherized Hinges



When performance hinges on beating the elements.

STANLEY's CB series weatherized hinges deliver quality and performance in the toughest of elements. The 626W Satin Chrome Weatherized hinge is constructed of brass leaves and a hardened steel pin, then plated with our premium weatherized finish. The 630W Satin Stainless Weatherized hinge is furnished from stainless steel leaves and pin. Both the 626W and 630W weatherized hinges are given an additional clear coat finish that resists rust, corrosion and salt to ensure they maintain their visual appeal throughout the product life cycle.

These weatherized hinges are the ideal solution for applications like natatoriums, water treatment facilities and exterior gates. Pair the 626W weatherized hinge with the matching PRECISION Hardware 626W weatherized exit device for a consistent look.

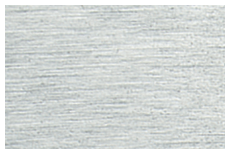


Long-lasting performance and durability.

STANLEY weatherized hinges combine long-lasting visual appeal with greater durability resulting in lower maintenance and a longer product life, delivering both strength and aesthetics in any application.

CB Series Weatherize Hinges Specifications

Certifications	ANSI/BHMA A156.18-2016 guidelines for true architectural finish ANSI/BHMA A156.1-2016 Salt Spray Test - 800 hrs UL294 6th Edition Corrosion Test Outside Moist hydrogen sulfide (H ₂) – air mixture UL294 6th Edition Corrosion Test Outside Moist carbon dioxide (CO ₂) – sulfur dioxide (SO ₂) air mixture UL294 6th Edition Corrosion Test Outside Salt Spray
Product Specifications	<p>626W Formulated to withstand environmental challenges All exterior components constructed from brass All exterior components plated with satin chrome All exterior components given an additional protective clear-coat</p> <p>630W Formulated to withstand environmental challenges All exterior components constructed from stainless steel All exterior components given an additional protective clear-coat Meets NFPA 80 requirements</p>
Models	<p>CB191 Grade 2 Standard Weight CB199 Grade 1 Heavy Weight CB1960 Grade 2 Standard Weight CB1961 Grade 1 Heavy Weight</p>
Hinge Options	<p>NRP (Non-Removable Pins) Non-removable pin hinges have a set screw in the barrel accessible only when the door is swung open making unauthorized pin removal difficult. Loosening the set screw permits pin removal and replacement.</p>
Sizes	<p>4.5 x 4 4.5 x 4.5 5 x 4.5 5 x 5</p>
Finishes	<p>626W: Satin Chrome 630W: Satin Stainless</p>
Warranties	<p>Lifetime mechanical Five-year finish</p>



626W: Satin Chrome



630W: Satin Stainless

Features

STANLEY Weatherized Hinges

- **Designed to last.** STANLEY weatherized hinges were specifically designed for locations where you need protection against the harshest elements. Both the 626W and the 630W finishes far exceed the ANSI/BHMA salt spray testing requirements.
- **True architectural finish.** The 626W and 630W finishes meet ANSI requirements for a true architectural finish.
- **Premium warranty.** STANLEY weatherized hinges come with a five-year finish warranty
- **Greater durability.** Resistance to rust, corrosion and salt results in a longer product life and uncompromised performance.
- **Higher value.** Reduced maintenance and a longer product life deliver the highest value for exterior applications.
- **Weatherized options.** Pair the 626W weatherized hinge with the matching 626W weatherized PRECISION exit device for a consistent look.



The quality and performance of STANLEY products earns the trust of industry experts and end users alike. The CB Weatherized Hinge series is just one of the reasons more Americans prefer the name STANLEY when it comes to hardware.

To order, specify hinge model, option, size, and finish of 626W or 630W.

stanleyhardwarefordoors.com

dormakaba

© 2019 Stanley Black & Decker, Inc. STANLEY® and the STANLEY® Notched Rectangle logo are registered trademarks of Stanley Black & Decker Inc. or one of its affiliates, and are used under license.

STANLEY

ST-0352

© 2019 dormakaba USA Inc.